



CÜMLEDE
Gruplar ve Temalar

webinar
serisi

**Roberto
Petrucci
&
Viktória
Németh**



WhatsApp
0530 545 03 25

İngilizceden ardl çeviri

SET8

ETOBUR BİTKİLER

2 vaka, 4 remedi



10-11 EKİM

20.00-23.00

HOMEOPATHY



ESSENTIALS

Roberto Petrucci - Viktória Németh



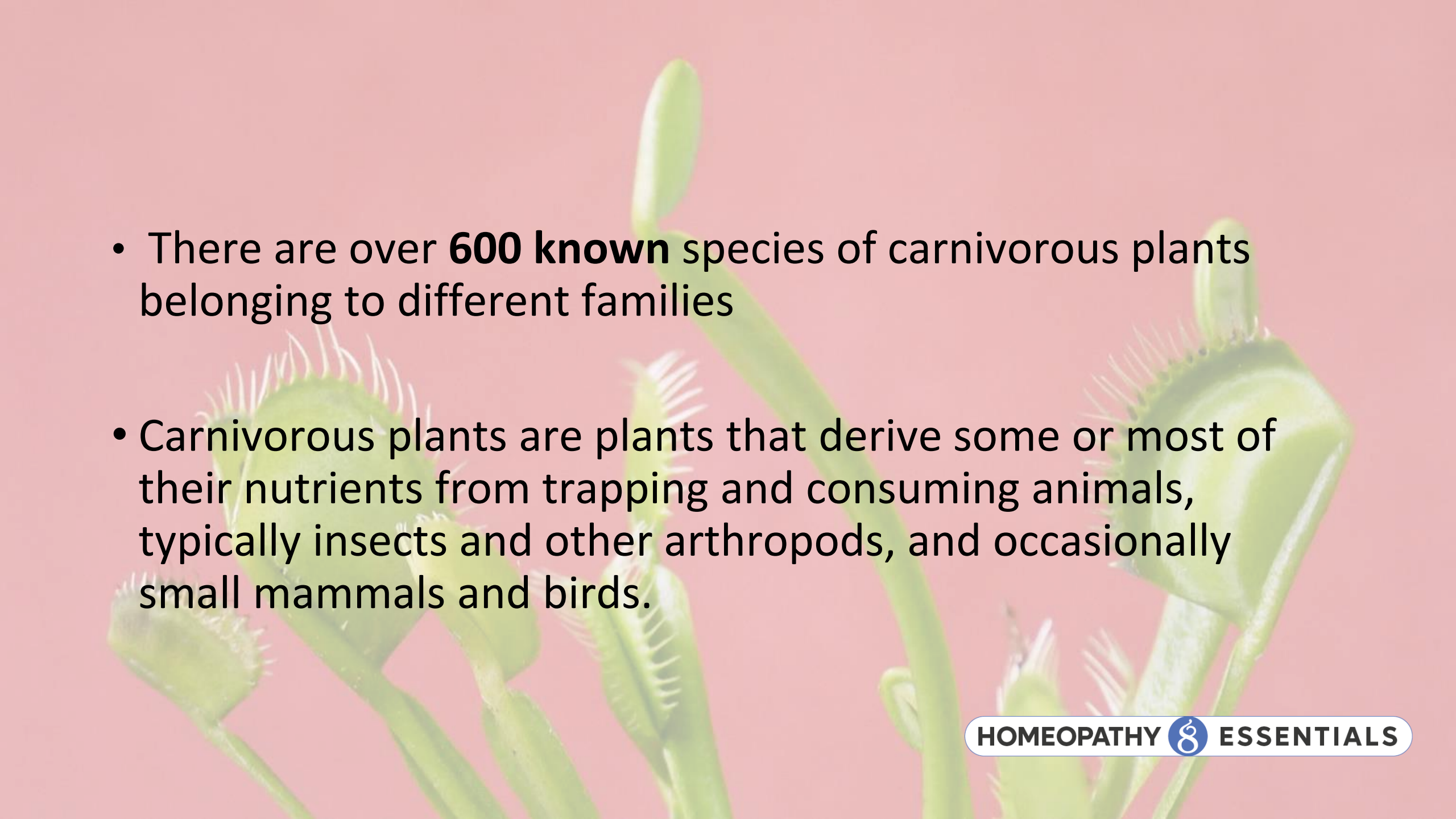
CARNIVOROUS PLANTS

CARNIVOROUS PLANTS

In
NATURE

HOMEOPATHY  ESSENTIALS

Roberto Petrucci - Viktória Németh

- 
- There are over **600 known** species of carnivorous plants belonging to different families
 - Carnivorous plants are plants that derive some or most of their nutrients from trapping and consuming animals, typically insects and other arthropods, and occasionally small mammals and birds.

The background of the slide features several Venus flytraps (Dionaea muscipula) in various stages of growth. The plants are green with prominent, hair-like cilia around the edges of their traps. The background is a soft, light pink color.

Carnivorous plants are commonly found in habitats with **nutrient-poor soils**, such as:

- acidic bogs
- marshes
- swamps
- and other wetland environments

These habitats typically lack sufficient nitrogen and phosphorus, forcing these plants to rely on carnivory as an alternative nutrient source

Definition

Plants are considered carnivorous if they have these five traits:

- 1. capture prey in traps**
- 2. kill the captured prey**
- 3. digest the captured prey**
- 4. absorb nutrients from the killed and digested prey**
- 5. use those nutrients to grow and develop.**

Other traits may include the attraction and retention of prey.

Adaptation for Prey attraction

- Carnivorous plants do not actively hunt or seek out their prey like animals do
- They rely on their **traps and attractants**, such as colorful or scented structures, nectar, or pheromones, to lure insects and other small organisms into their traps

Trapping mechanism



Five basic trapping mechanisms are found in carnivorous plants.

Pitfall traps

- **Trap Structure:** Pitfall traps consist of a modified leaf that forms a deep, tubular structure or "pitcher." The pitcher has a wide mouth or opening that narrows down into a tubular chamber, often filled with digestive fluids. (Open with pool of water or Covered or no pool of water)
- **Prey Attraction:** The pitcher plants employ various mechanisms to attract prey. They may produce nectar, have brightly colored or patterned surfaces, or emit attractive scents that lure insects towards the pitcher opening.
- **Slippery Surfaces:** The inner walls of the pitcher are typically smooth and slippery, making it difficult for prey to climb back out once they fall into the trap.
- **Trapping the Prey:** Insects, attracted by the lure, land on the rim of the pitcher and may accidentally slip or lose their footing due to the slippery surfaces. They then fall into the tubular chamber, unable to escape.
- **Like:** *Nepenthes*, *Heliamphora*, *Cephalotus*, *Brocchinia*, *Catopsis*, *Sarracenia purpurea* and *S. rosea*)



Flypaper traps

- **Glandular Hairs:** Plants that utilize the flypaper trap have leaves covered in specialized glandular hairs or tentacles (fixed tentacles or mobile tentacles). These tentacles produce sticky secretions or mucilage.
- **Prey Attraction:** The glands on the tentacles secrete nectar or emit attractive scents that entice insects to land on the leaf surface.
- **Sticky Capture:** When an insect lands on the leaf, it becomes stuck to the adhesive secretions produced by the glandular hairs. The sticky substance immobilizes the prey and prevents its escape.
- **Like:** Pinguicula, Drosera



Snap traps

- **Specialized Leaf Structure:** The snap trap is formed by modified leaves that are hinged at the center. These leaves typically have two lobes with sensitive trigger hairs on their inner surfaces.
- **Prey Detection:** When an insect or other small organism comes into contact with the trigger hairs, it stimulates the trap. The trigger hairs act as sensors that detect the presence and movement of prey.
- **Rapid Closure:** If the trigger hairs are stimulated multiple times within a short period, the trap is triggered and rapidly closes. The two lobes of the trap fold together, forming a sealed enclosure with the prey trapped inside.
- **Mechanical Trapping:** The closure of the trap creates a tight seal, preventing the escape of the captured prey. The leaves interlock, creating a secure chamber.
- **Like:** Dionaea, Aldrovanda



Bladder trap

- **Bladder Structure:** Bladderworts possess small, bladder-shaped structures called "bladders" or "utricles" that are typically found along the stems or submerged in the water.
- **Suction and Trigger Mechanism:** The bladders have a small opening or trapdoor covered by a sensitive trigger mechanism. When triggered, the trapdoor opens rapidly, creating a suction force inside the bladder.
- **Prey Capture:** The suction force generated by the opening of the trapdoor creates a vacuum-like environment within the bladder. This sudden change in pressure creates a strong inward flow of water, along with any organisms in the vicinity, into the bladder.
- **Immobilization:** Once inside the bladder, the prey becomes trapped, as the inward-flowing water prevents their escape. The bladder is designed to be watertight, ensuring that the captured organisms remain submerged within the trap.
- **Like:** Utricularia



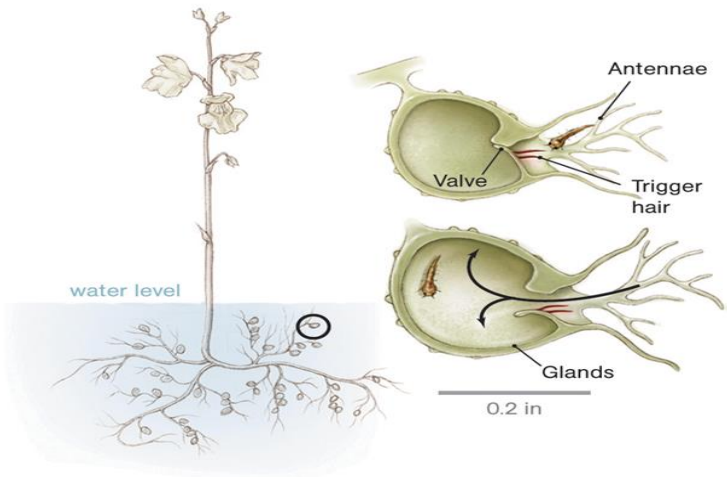
Lobster-pot traps

- **Prey Attraction:** The traps of lobster-pot plants often secrete nectar or produce bright colors to attract prey, particularly small invertebrates like water fleas or other aquatic organisms.
- **Entrance and Exit:** The entrance of the trap is designed to allow easy access for potential prey. However, the interior of the trap contains downward-pointing hairs or bristles that make it difficult for the prey to escape.
- **One-Way Passage:** Once the prey enters the trap, it encounters the downward-pointing hairs or bristles. These hairs or bristles allow the prey to move further into the trap, but prevent it from moving back out.
- **Smooth Inward Surface:** The interior walls of the trap are usually smooth, making it challenging for the trapped prey to climb or navigate their way back to the wider entrance.
- **Like:** *Darlingtonia*, *Sarracenia psittacina*

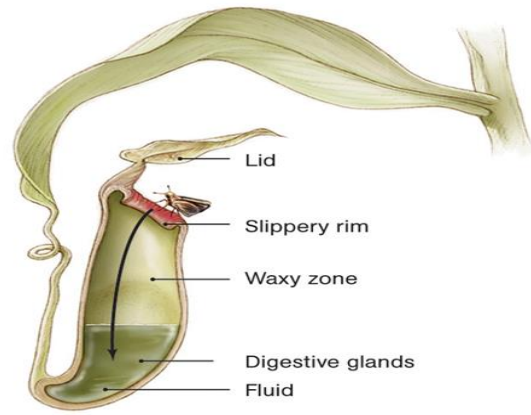


DIGESTION

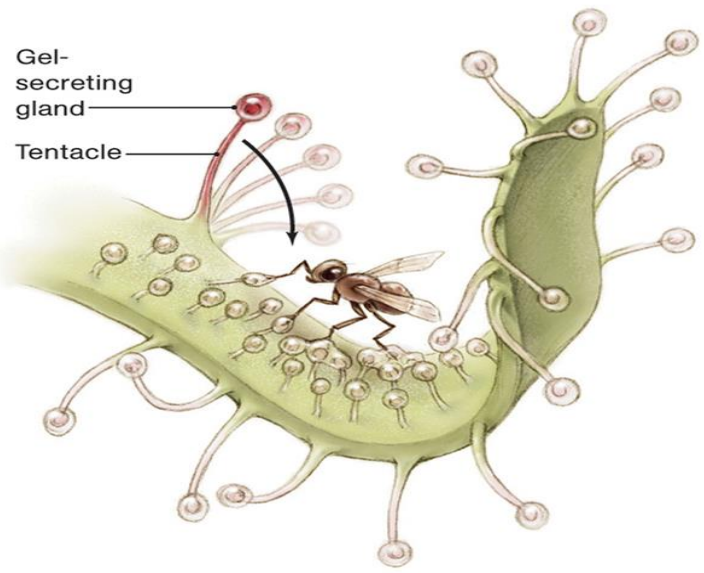
Once the prey is trapped and digested, carnivorous plants absorb the released nutrients through specialized cells in their leaves or traps. These plants have modified glandular structures that facilitate the absorption of nitrogen, phosphorus, and other essential nutrients (K^+ , Na^+ , Ca^{2+} and Mg^{2+}) derived from the digested prey.



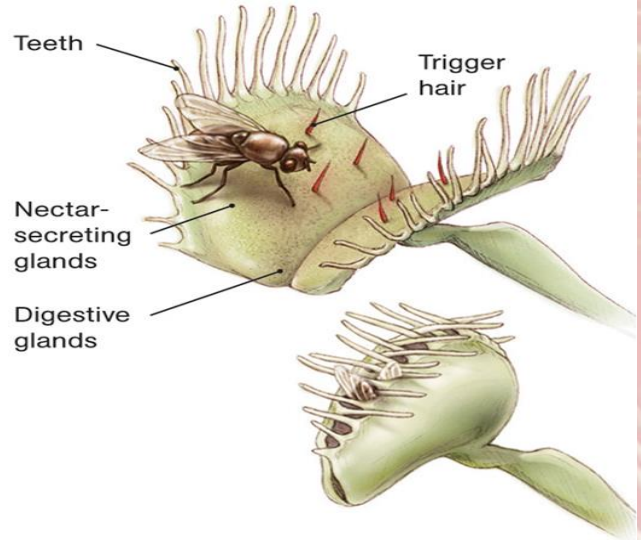
bladderwort



pitcher plant



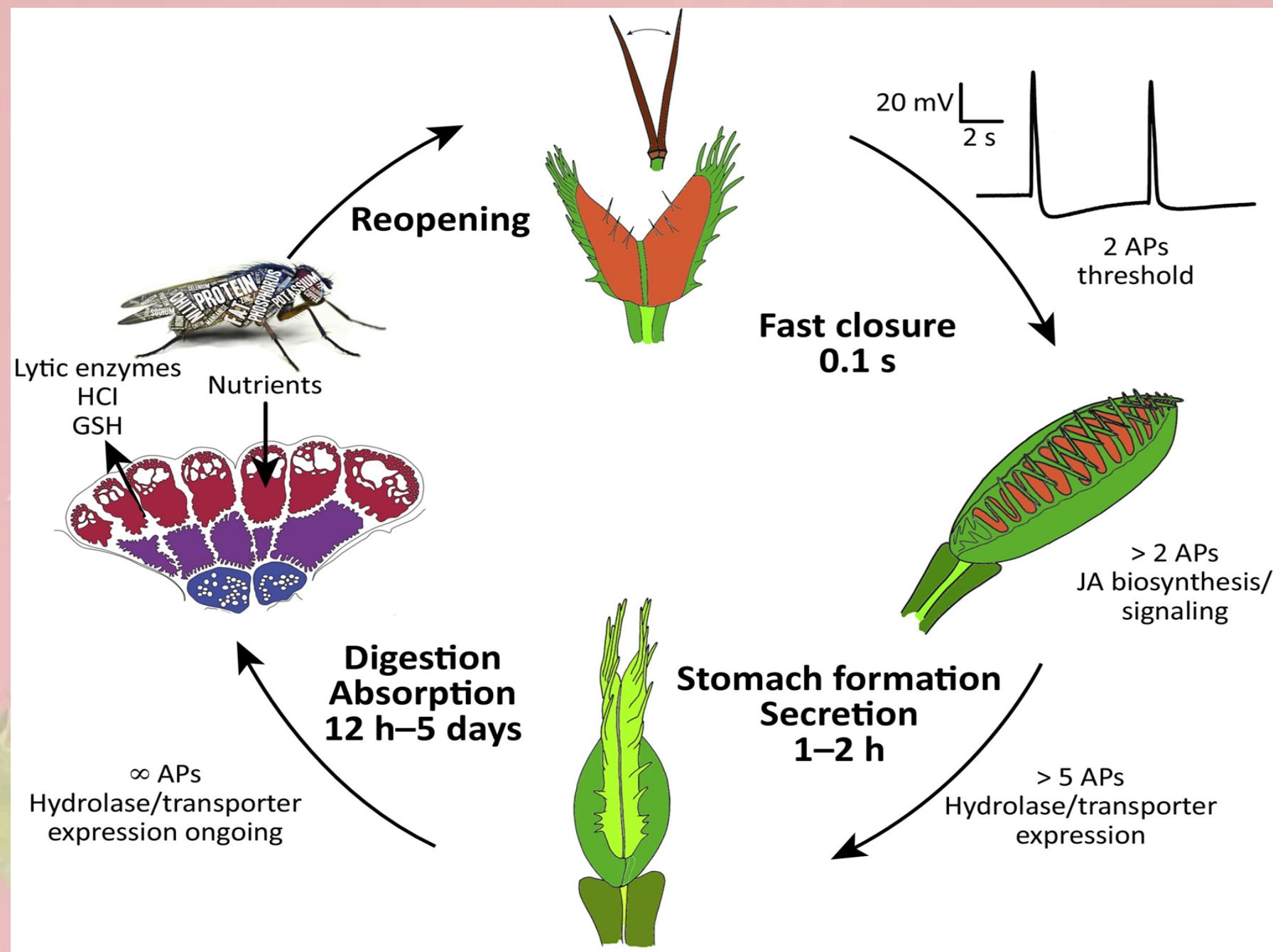
sundew



Venus flytrap



HOMEOPATHY & ESSENTIALS



MEDICAL USE

A study published in 2009 by researchers from Tel Aviv University indicates that secretions produced by carnivorous plants contain compounds that have

anti-fungal properties

and may lead to the development of a new class of anti-fungal drugs that will be effective against infections that are resistant to current anti-fungal drugs.

Roberto Petrucci - Viktória Németh

CARNIVOROUS PLANTS IN HOMEOPATHY

HOMEOPATHY  ESSENTIALS





“ The most wonderful plants in the world !”

Charles Darwin

HOMEOPATHY  ESSENTIALS



Plants that get their own back on animals

HOMEOPATHY  ESSENTIALS

Behaviour

- Restlessness, irritability, and a tendency to be easily provoked or agitated. They are impulsive and have quick reflexes.
(first phase)
- Rage, fury, violence and madness with suicidal disposition
(second phase)
- Depression, fears, anxieties, cannot stay alone
(third phase)

Victim

- Overwhelmed
- Powerless in their circumstances, relationships
- Emotional struggles
- Lack of sense of control over their lives
- Loosing the ability of being resilient
- Loosing the self-support for adaptation

Executioner

- Being an executioner for them means to survive, to face challenging circumstances or environments
- They act quick with power
- Have a huge inner strength
- Think without much forethoughts
- Strong and quick reaction

Attraction

- Deep craving for attention
- Craving for recognition
- Seek external validation
- Strong desire to be noticed
- Strong desire to be admired
- Easily trust and easily lost it

Deception and betrayal

- Deception for them means survival and adapt ownself in challenigng situations/environment
- Survival for them is not as easy because they easily can loose their emotional balance
- For them one and the most mportant thing is self-discovery and overcoming obstacles

Trapped and Stuck

- Sensation of being trapped
- Sensation of being stuck or imprisoned
- Unable to move forward in life (physically, emotionally and psychologically)
- Not being able to see the new possibilities
- Sensation of being confined / constricted (physically, emotionally and psychologically)

Competition

- They look like animals, but there is no competition or sexuality
- Seeking for attention and reacting quickly for self defense means for them to protect their own emotions
- It is difficult for them to be opened and in the meantime to keep the self-protection
- Competition and seduction for them means self-discovery

Sensitivity

- Sensitivity and reactivity is more important than to survive
- They are highly sensitive and highly reactive people
- Survival is a self-defense, to protect and not to trigger their sensitive physical and emotional body
- They can have exaggerated reactions (physically and emotionally)
- They sensitive for environment factors, emotions, stimuli even medications

Respiratory complaints

- Asthma
- Asphyxia
- Dry cough
- Spasmodic cough
- Sticky discharges
- Do not tolerate the touch (in general, but when sick they can be hypersensitive to touch or pressure)

Gastrointestinal

- Digestive disturbances
- Indigestion
- Bloating
- Discomfort feeling after eating
- Issues in absorbing and assimilating nutrients

CARNIVOROUS PLANTS

- Victim and executioner
- Attracting and luring
- Clever deception and betrayal
- Trap, constriction, claustrophobia and suffocation
- No competition nor sexuality (differential diagnosis animal kingdom)
- Sensitivity more prominent than survival
- Respiratory complaints: asthma, asphyxia, cough dry and spasmodic
- Gastrointestinal tract complaints with nutrition and assimilation complaints



WOMAN

40 years old

ENGINEER

EAR NOISES

MIGRAINE WITH AURA

first consultation: DECEMBER 2012



- MENARCHE: 11 years
- REGULAR MENSES
- MENSES DURATION 6 days
- MENSES-RELATED COMPLAINTS
- BEFORE: irritability, nervousness, melancholy

**GYNECOLOGICAL
PROBLEMS**

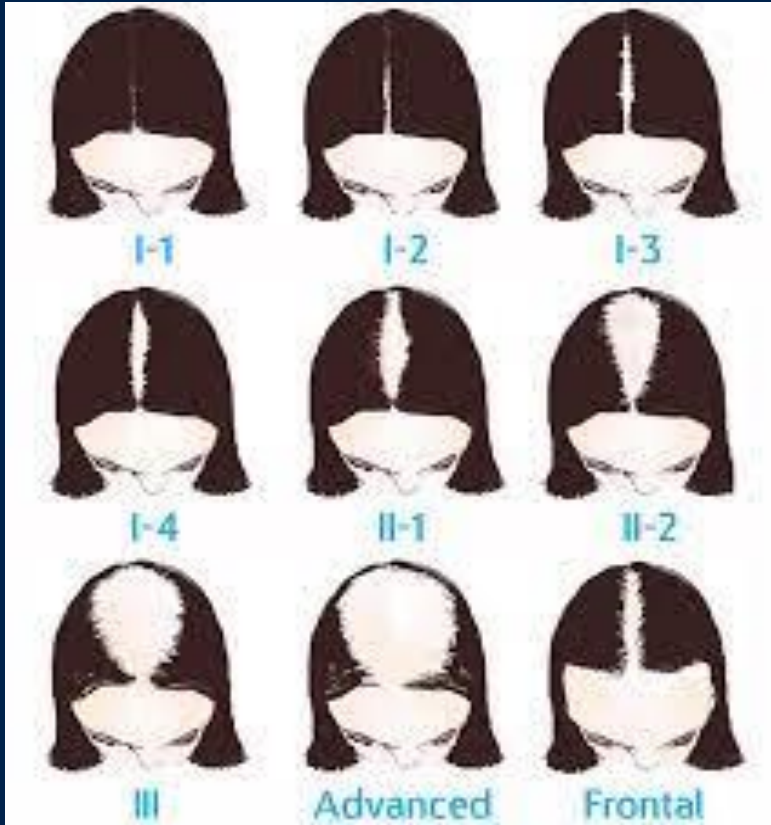
HOMEOPATHY  **ESSENTIALS**



- DELIVERY DATES: 2006 - 2008 - 2011
- ABORTIONS: 1 spontaneous in 2007 (7th week)
- CONTRACEPTIVE PILL (Diane) FROM 18 to 28 years of age prescribed by a dermatologist to treat androgenetic alopecia
- SIDE EFFECTS FROM CONTRACEPTIVE PILL: swelling, water retention

**GYNECOLOGICAL
PROBLEMS**

HOMEOPATHY  ESSENTIALS



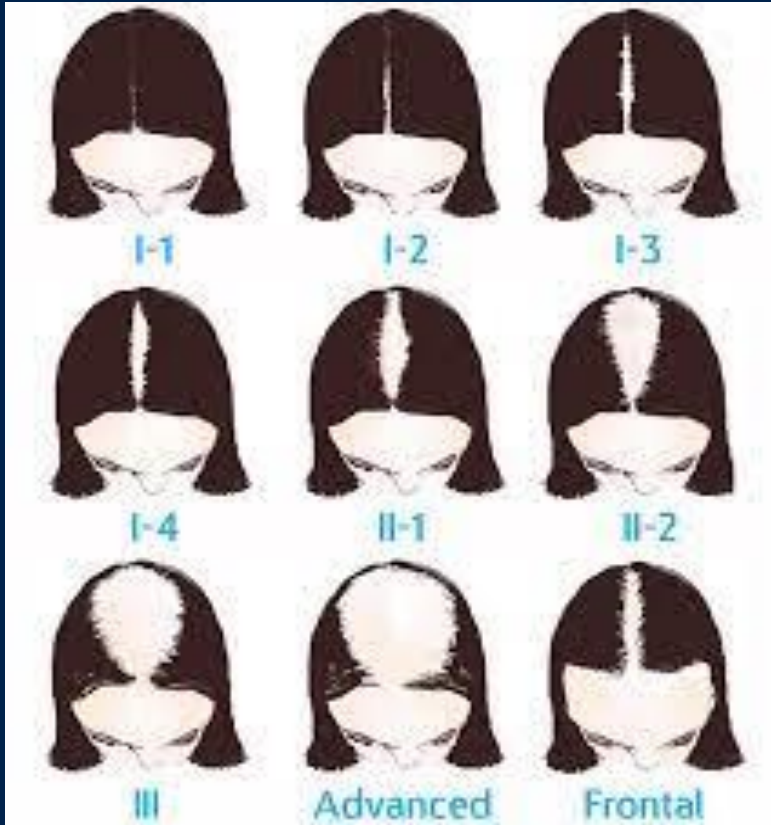
- Androgenetic alopecia since the age of 13, which appeared following a move to another city with the consequent loss of friendships, ties, affections then difficult to rebuild
- Initially treated with supplements and carbonic snow applications (until the age of 18), then with Diane and Cyproterone Acetate

ALOPECIA

HOMEOPATHY



ESSENTIALS



- The problem was never solved
- Since 2000 I no longer take any medication and I am an implant carrier
- The implant is very demanding: it has to be removed every 3 weeks to clean it

ALOPECIA

HOMEOPATHY



ESSENTIALS



- Everything started when I was 13 when I moved to another town, a small town 30 km away
- When my parents told me they were moving I felt something BREAKING inside; from there I started to have hair loss with thinning that increased over time
- I didn't want to go at all and I cried a lot

MOVING

HOMEOPATHY



ESSENTIALS



- I was like TORN and carried there by weight
- I didn't want to leave my friends
- In the old town I had friends, in the new town I didn't
- It was AS IF I WAS SPLIT INTO TWO

MOVING

HOMEOPATHY  **ESSENTIALS**



When I was at school it was fine;
when I came home I was in an abyss

ABYSS

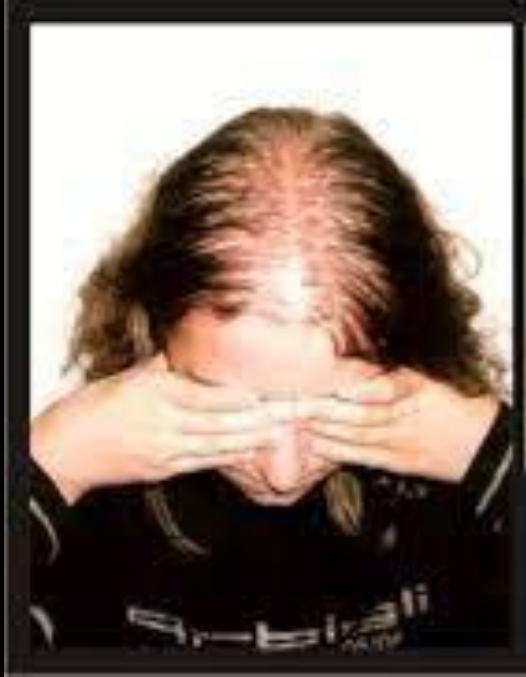
HOMEOPATHY  ESSENTIALS



- We had to move because grandfather couldn't live alone any more
- I couldn't digest the fact that my father's sisters didn't do anything even though they lived in the same village as grandfather

I DID NOT DIGEST...

HOMEOPATHY  ESSENTIALS



I became aware of the thinning
after the announcement of the move

HAIRS

HOMEOPATHY  ESSENTIALS



- I'm suffering from migraine with aura then headache in the frontal area appears, pulsating, lasting a few hours
- In 2008 in the 7th month of pregnancy I started to have strange sensations in the left eye (bands, flickerings), then tingling in the hand radiating to the arm
- In the Hospital I underwent neurological examination and EEG then negative MRI

MIGRAINE WITH AURA

HOMEOPATHY  **ESSENTIALS**



- After 2 months another episode with numbness also in the face (left side), tongue and left leg
- After the aura usually migraine on the right side; only once visual disturbance in the right eye and disturbances in the right part of the body

MIGRAINE WITH AURA

HOMEOPATHY  **ESSENTIALS**



- The aura usually lasted between 15 and 30 minutes
- Migraine lasted 2 - 3 hours and disappeared spontaneously
- In the following days strange perception of the space around, as if wearing glasses too strong
- After the second pregnancy complaints 1 - 2 times a month until April 2009

MIGRAINE WITH AURA

HOMEOPATHY  **ESSENTIALS**



Since the first delivery, tinnitus in the right ear and in April 2009 the doctor prescribed beta-histine dihydrochloride 16 mg. at the change of season for 10 days a month with partial improvement

TINNITUS

HOMEOPATHY  **ESSENTIALS**



- THE TINNITUS IS SYNCHRONOUS WITH THE PULSE
- The auras no longer returned and the tinnitus was improved; since the end of September 2012 it has worsened again

TINNITUS

HOMEOPATHY  **ESSENTIALS**



At the end of September 2012 she stopped breastfeeding and in the last 2 months has had 3 episodes of auras (only visual) lasting 15' with then pulsating migraine

AURA CAME BACK

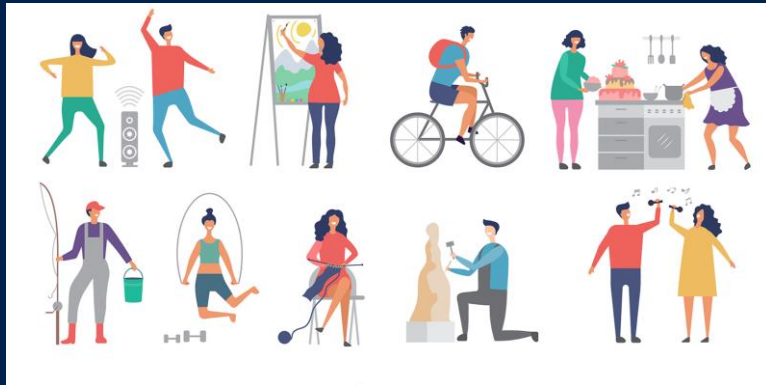
HOMEOPATHY  ESSENTIALS



- From 1 to 10 November she took beta-histine dihydrochloride 24 mg. with side effects: dizziness, sensation of faintness, low blood pressure (90/60)
- At that point the doctor advised taking 16 mg. but she was afraid and she has not taken it so far

TINNITUS

HOMEOPATHY  **ESSENTIALS**



READING - TRAVEL - SPORTS
(running and spinning - before 3 children)
currently no any sports

HOBBIES AND SPORT

HOMEOPATHY  ESSENTIALS

MIND



HOMEOPATHY 



**I am a perfectionist,
I hardly delegate,
I would like to do everything myself
and everything well**

CHARACTER

HOMEOPATHY  **ESSENTIALS**



- She worked in an architecture and engineering office
- Now mainly involved in energy certification
- She is not unhappy, it's a good compromise

CHARACTER

HOMEOPATHY  ESSENTIALS



- **I SUBMIT** with my mother-in-law and then **I RETALIATE** with my husband
- **My mother-in-law is someone I CANNOT DIGEST**

MOTHER-IN-LAW

HOMEOPATHY  ESSENTIALS



- As a child I often dreamt of falling into a ravine (in the shape of a pipe)
- I would walk on the edge of the ravine tiled with light green tiles which were those of my grandmother's bathroom and then fall into the ravine and waking up I would feel the sense of falling into the void
- It's a dream I had many times as a child

RECURRENT DREAM

HOMEOPATHY  **ESSENTIALS**



- It's a geometric ravine like a swimming pool but very very deep with vertical sheer walls, not the classic earth ravin
- A kind of tube, of a very deep swimming pool but I couldn't see the water
- I was walking on the edge and at a certain moment I was sliding in

RECURRENT DREAM

HOMEOPATHY  ESSENTIALS



MK

3 drops 1 time a day

**FIRST
CONSULTATION**

HOMEOPATHY 



- Tinnitus reduced by 50% as intensity; frequency and duration unchanged
- It always worsens with certain movements (bending forward) and especially with exertion

**CONSULTATION
AFTER 2 MONTHS**

HOMEOPATHY 



- MENSES-RELATED DISORDERS BETTER (irritability, nervousness, melancholy)
- No more crying fits

**CONSULTATION
AFTER 2 MONTHS**

HOMEOPATHY 



- **AURA, MIGRAINE AND PHOTOPHORBIA (including visual disturbances when there is a lot of light) ARE CLEARLY IMPROVED**
- **I HAVE HAD NEITHER AURA NOR MIGRAINE SINCE I STARTED WITH HOMEOPATHY**

**CONSULTATION
AFTER 2 MONTHS**

HOMEOPATHY 



- I FEEL MORE ENERGETIC THAN BEFORE
- THE SITUATION WITH MY MOTHER-IN-LAW IS STABLE but my mood improved without any external factors causing the improvement

**CONSULTATION
AFTER 2 MONTHS**

HOMEOPATHY 



MK

7 drops 2 times a day

**CONSULTATION
AFTER 2 MONTHS**

HOMEOPATHY 



- She had no Covid
- No more aura or migraine
- No more dizziness or vertigo; just a few sporadic light sensations that immediately disappeared (related to tiredness)

LAST CONSULTATION
(2023.01.13)

HOMEOPATHY 



- Photosensitivity much improved compared to before but it still bothers me a bit driving in the evening
- No more tingling

**LAST CONSULTATION
(2023.01.13)**

HOMEOPATHY 



- Regular menses; usually between 25 and 30 days
- No complaints related to menses

**LAST CONSULTATION
(2023.01.13)**

HOMEOPATHY 



- Tinnitus fine during the day; in the evening lying down slightly annoying (amelioration 90% compared to first consultation)
- No more excoriations on scalp

LAST CONSULTATION
(2023.01.13)

HOMEOPATHY 



- Stomach fine
- Intestine regular

LAST CONSULTATION
(2023.01.13)

HOMEOPATHY 



Mood is good

LAST CONSULTATION
(2023.01.13)

HOMEOPATHY 



Also her mother-in-law is fine...

LAST CONSULTATION
(2023.01.13)

HOMEOPATHY 



- Over the years she has taken the remedy in various potencies and with different frequencies
- In certain moments the remedy was discontinued and only taken when needed

**LAST CONSULTATION
(2023.01.13)**

HOMEOPATHY 

SOME RUBRICS OF THE PRESCRIBED REMEDY



RadarLayout
The world's No.1 since 1982

Anne Vervarcke
Carlo Rezzani
André Saine
Hélène Renoux
Jeremy Sherr
Massimo Mangialavori
Roberto Petrucci

**UNITING REPERTORY, MATERIA MEDICA AND PATIENT INFORMATION
IN A SINGLE INTUITIVE INTERFACE**

HEAD - HAIR - falling

HEAD - PAIN

VISION - COMPLAINTS of vision

VISION - DIM - headache - during

EYE - PHOTOPHOBIA

EAR - NOISES in - swashing

EAR - NOISES in - synchronous with pulse

NOSE - EPISTAXIS

SARRACENIA PURPUREA

PURPLE PITCHER PLANT

sarr. (Synthesis Adonis 541)

GROUP: CARNIVOROUS PLANTS



HOMEOPATHY  ESSENTIALS

Roberto Petrucci - Viktória Németh

SARRACENIA PURPUREA

- Victim and executioner
- Trap, constriction, claustrophobia and suffocation
- Disposition to injure himself up to suicidal thoughts
- Alternation of symptoms (activity and indifference, delusion being a criminal and sensation he suffered wrong, heat and chill)
- Music: weeping from music, delusion hearing music and ear noises resembling music, dreams about music and funeral music
- Headache with visual aura (flickering) and neurological aura (numbness and formication in face, tongue and limbs)
- Ear noises (buzzing, swashing, whistling) synchronous with pulse
- Skin complaints (psoriasis, urticaria, herpetic eruptions) with intolerable itching; indicated in the past in the treatment and prophylaxis of smallpox



NEPENTHES DISTILLATORIA

BADURA

nep. (Synthesis Adonis 126)

GROUP: CARNIVOROUS PLANTS

HOMEOPATHY  ESSENTIALS

Roberto Petrucci - Viktória Németh



NEPENTHES DISTILLATORIA

- Victim and executioner
- Trap, constriction, claustrophobia and suffocation
- Overactivity, restlessness, hastiness and impatience
- Optimism, everything seems easier
- Extreme tiredness, apathy, general fatigue, prostration and narcolepsy (second phase)
- Gastrointestinal tract complaints with nutrition and assimilation complaints
- Female disorders (amenorrhea, metrorrhagia, endometriosis, frigidity)
- Syphilitic miasm





WOMAN

37 years old

BORDERLINE PERSONALITY DISORDER (BPD)

ASTHMA - GASTROINTESTINAL TRACT COMPLAINTS

first consultation March 2018



- During a consultation I receive a request from one of my patients asking me for an online appointment for a friend of his wife.
- This patient's wife was born in Estonia and the appointment is for a woman who lives in Tallinn
- The patient explains to me that she is a rather peculiar woman....
- I ask how peculiar...
- You'll see, you'll see Doctor... she has a strange character, I'm sure you will have a good time (laughs amused)

**CONSULTATION
REQUEST**

HOMEOPATHY 



- I think she also has some problems in her brain...
- Then I'll tell you something I shouldn't tell you, but I don't think my wife's friend will tell you...
- What?
- She says she is working as PR, but I am sure she has another job....

**CONSULTATION
REQUEST**

HOMEOPATHY 



- The patient chuckles and I wait for him to continue
- Since the patient looks at me with strange eyes, I tell him if he wants to tell me more...

**CONSULTATION
REQUEST**

HOMEOPATHY 



- Yes, public relations, let's say some kind of special relations, not so public...
- I mean, I'm sure she's a prostitute; I don't know if it's full-time or part-time...
- but a friend of mine had, let's say, a close encounter of the third kind...

PUBLIC RELATIONS

HOMEOPATHY 



- What do you mean?
- Come on Doc! You got it right and my friend told me she's an extraterrestrial!!!
- OK, that's enough... I don't want to know any more, at least for the moment...

PUBLIC RELATIONS

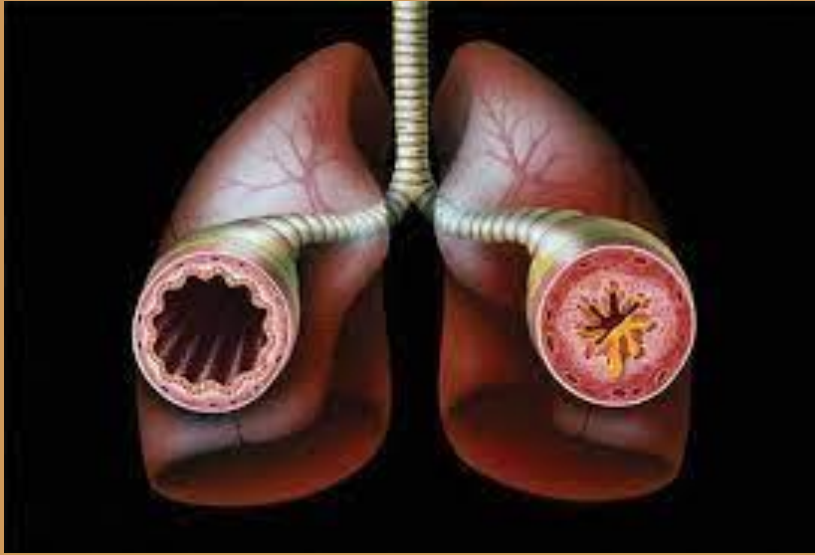
HOMEOPATHY 



- I see the patient online after a couple of months
- I started as always with the physical symptoms that were reported in her anamnesis

CONSULTATION

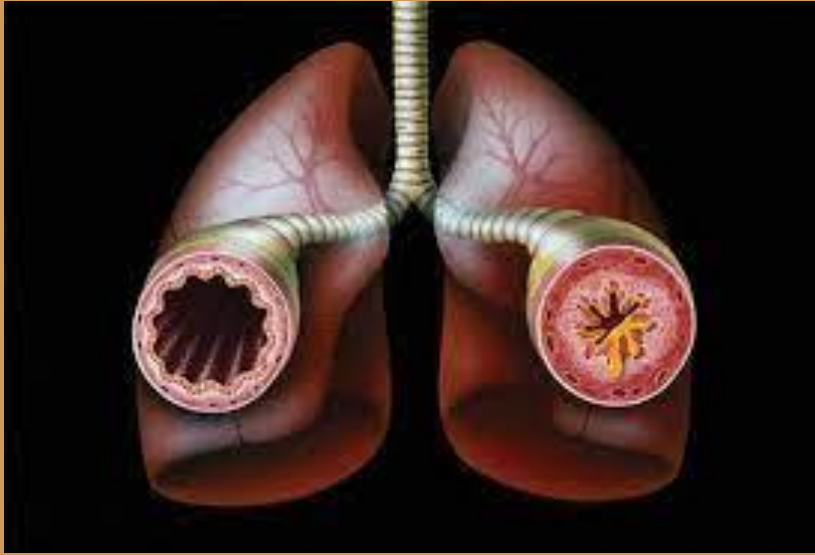
HOMEOPATHY 



- My main problem is asthma. I have suffered from it since I was five years old, and it has always worsened
- It's not an allergy problem, I'm not allergic
- Every time I get sick, I get asthma; if I get a small cold nothing happens, but if it's a bit more serious, the asthma comes

ASTHMA

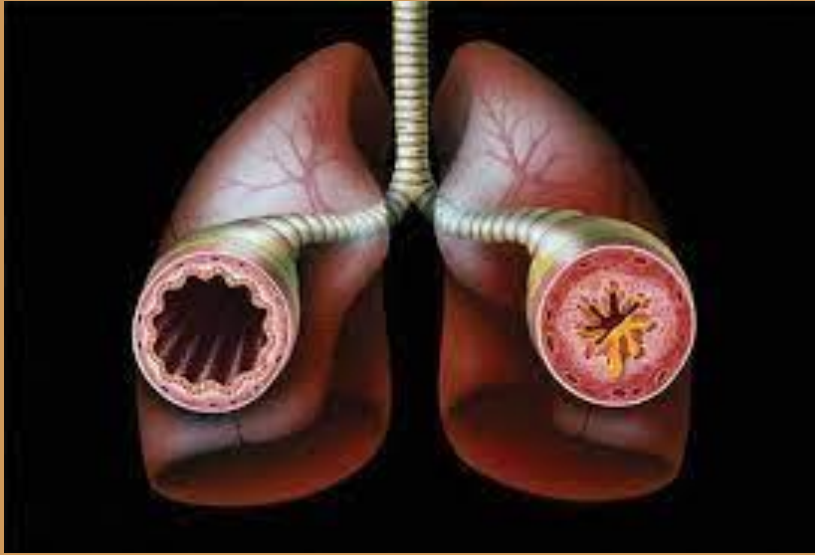
HOMEOPATHY 



I ask for an explanation of the symptoms and I understand that it gets worse when lying down and she has difficulty breathing in; nothing else, even movement seems indifferent in the sense that she does not have great changes when standing or walking; of course, she cannot run or make other efforts...

ASTHMA

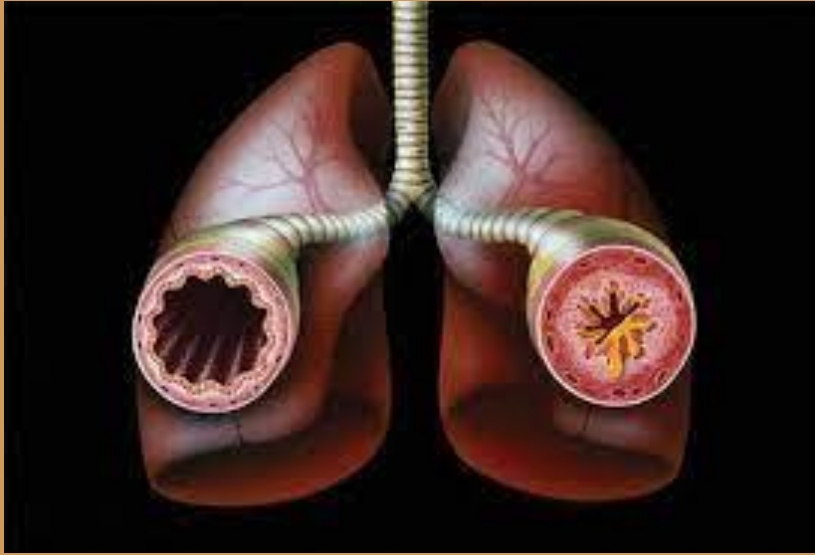
HOMEOPATHY 



- She then goes on to say that along with asthma she always gets a cough
- She tells me: the cough is always dry and when it starts it's a hell... it doesn't stop and it's like a hoover sucking all the energy out of my lungs...
- Especially at night it takes my breath away... I often have to take cortisone otherwise I can't breathe

ASTHMA

HOMEOPATHY 



- I ask where the cough comes from
- It seems to me that it comes from below in the sense that I was telling you before; it is as if my lungs are being sucked out but I cough because here, in the centre of the chest, it is all dry

ASTHMA

HOMEOPATHY 



- **Actually, I'm dry all over, my throat is dry, my nose is dry, my eyes are dry and even my lips are always dry; luckily I don't have vaginal dryness but I'm afraid that in the menopause it will be terrible and it's not good...**
- **My doctor had me tested because he was convinced I had Sjögren's Syndrome, but all the tests were negative**

DRYNESS

HOMEOPATHY 



- Earlier you told me that you started suffering from asthma at the age of 5; what happened at 5?
- When I was 5, I had a terrible whooping cough; my mother says it lasted 4 months and that I often risked suffocating...
- I mean, my lungs seem to have some problems....

WHOOPING COUGH

HOMEOPATHY 



- Do you suffer from any other diseases?
- For about 5 years I have been suffering from intestinal problems; my doctor says I have irritable bowel syndrome

**IRRITABLE BOWEL
SYNDROME**

HOMEOPATHY 



- What symptoms do you have?
- I have no symptoms, the only thing is that every night or almost every night I get up twice with diarrhea

**IRRITABLE BOWEL
SYNDROME**

HOMEOPATHY 



- For five years you have had diarrhea every night?
- It started slowly; first I had attacks 1-2 times a month and slowly they became more frequent; for about 3 months now every night or almost every night I have a fixed appointment, at 1 and 2 o'clock...
- In the last 5 years I have lost 15 kg.; now I weigh 50 kg., before 65
- I ask her height and she says she is 183 cm tall

**IRRITABLE BOWEL
SYNDROME**

HOMEOPATHY 



And I'm not even hungry because I often feel nauseous, I should always drink coke to avoid nausea; if I drink water, I don't eat anymore...

NAUSEA

HOMEOPATHY 

Understanding SIDE EFFECTS

- Do you have other physical symptoms?
- Yes, I have other physical symptoms but I am convinced they are related to a medicine I take even though my Doctor says it is impossible
- I ask: what medicine do you take and what symptoms have you noticed?

OTHER SYMPTOMS

HOMEOPATHY 

Understanding
SIDE EFFECTS

Assumo una medicina che si chiama KETIPINOR,
credo che il principio attivo sia quetiapina;
prendo 400 mg. al giorno, da 4 mesi


BPD

HOMEOPATHY 

Understanding
SIDE EFFECTS

I take a medicine called KETIPINOR, I think the active ingredient is quetiapine; I have been taking 400 mg. a day for 4 months


BPD

HOMEOPATHY 



- And why did they give you this medicine?
- I started having the first complaints about 2 years ago; I became more irritable, I got angry at every little thing
- Then my partner forced me to go to the doctor because he said I had become paranoid and saw evil in everyone

BPD

HOMEOPATHY 



He says it was coming from me but it wasn't
you know how many bad people there are in
the world...

and I suffered real bullying in my workplace

BPD

HOMEOPATHY 



- What do you do?
- I do public relations and organize fashion-related events, but a woman who works with me, or perhaps I should say my boss, started to treat me badly, she is constantly changing my tasks

BPD

HOMEOPATHY 



- I was organizing an important event in Russia and after I had done the biggest job she gave the organization to another person
- She promised me more money and more responsibility, but she deceived me and in addition she set me against other people, in short, I felt persecuted but, I was!

BPD

HOMEOPATHY 



I felt trapped, I didn't know how to get out of this situation; I don't want to sound like a victim, my partner says I suffer from victimism, but it had become a fixed thought, an obsession, I didn't think about anything else

BPD

HOMEOPATHY 



- My doctor sent me to a psychiatrist who said he could help me with this drug
- He told me it could help in cases of bullying but that anyway my problem was a psychological disorder he called BPD , Borderline personality disorder


BPD

HOMEOPATHY 



- And how are you now?
- I'm better but it's not because of the medicine; in the meantime, some things have changed at work and now it's better; we're working differently...


BPD

HOMEOPATHY 

Understanding SIDE EFFECTS

- And what ailments have you had since KETIPINOR?
- First of all, I have difficulty swallowing; sometimes I get food stuck in my throat and if I don't have something to drink, I choke and then I don't see so well anymore, I have more difficulty reading, I have blurred vision

SIDE EFFECTS

HOMEOPATHY 

Understanding
SIDE EFFECTS

In addition, since the first month my periods have changed; the first month was short and then my period disappeared

SIDE EFFECTS

HOMEOPATHY 

MIND



HOMEOPATHY 



- Tell me something about your character
- Well, I am a woman...
- Tell me what women are like...

CHARACTER

HOMEOPATHY 



- Well, I don't want to give you a bad impression, but my friend told me that you are a person who doesn't judge
- I was struck by a sentence you said to my friend's husband when you first saw each other, and you told him that you hear so many stories and that everyone has his own life and his own way of living life and you are only interested in knowing these things in order to find a solution to the problem

CHARACTER

HOMEOPATHY 



- Well, that's actually what I think...
- Then I'll be very open with you

CHARACTER

HOMEOPATHY 



- I was telling you that I am a woman... and as a woman I like men and maybe more than men I like their money...
- I just try to find ways to earn some money; a woman has to learn how to attract men, sometimes with some strategies and some lies...
- For the past five years I have had a rather peculiar activity... I have discovered that many men like to be submissive, and I like to be in charge... let's say I have become a mistress

MISTRESS

HOMEOPATHY 



- Explain to me...
- You don't know what a mistress is?
- Well, let's say I do not have direct experience...


MISTRESS

HOMEOPATHY 



- Let's say a mistress has a few instruments of torture in her bag....
- But apart from the money, what do you like about it?

MISTRESS

HOMEOPATHY 



- Money is a lot, there are men who pay unthinkable sums to be subjected to the worst of the worst...
- I feel good, I feel strong, I feel like a kind of queen; is it bad to say that I like to see someone suffer?

MISTRESS

HOMEOPATHY 



- Sometimes there is also sex, but this part is what I like the least; I have never been crazy about sex and my partner always scolds me about this...
- He is always ready to have sex and likes to be violent... let's say that, in some way, I suffer with him what I do with other men

MISTRESS

HOMEOPATHY 



- Don't get me wrong, it's not really the same thing but my partner likes hard sex...
- He has even proposed to me to participate in my encounters with other men, but I have always refused

MISTRESS

HOMEOPATHY 



- Does this mean that your partner knows about your 'parallel life'?
- Yes, because he met me through one of my 'clients' and therefore already knew everything...

PARALLEL LIFE

HOMEOPATHY 



- And what does your partner say about all this?
- Well, he took it as a job... after all, he doesn't do much with his life and if we can afford a life of luxury, it's thanks to me

PARALLEL LIFE

HOMEOPATHY 



- Do you have any fears?
- My biggest fear is claustrophobia, I can't stand anything where I can get trapped, lifts, cellars, rooms without windows... imagine that we went to see a house and the second bathroom didn't have a window and although I really liked the house I said no
- My partner told me I could only use the other bathroom, but I said no, in a house that has a room without a window I don't live there... I feel suffocated!

FEARS

HOMEOPATHY 



10MK

5 drops 2 times a day

**FIRST
CONSULTATION
MARCH 2018**

HOMEOPATHY 



Last night I had a very strong asthma attack; I took cortisone after a few minutes, but I didn't improve and after 10 minutes I took another one then I fell asleep

**MAIL AFTER
2 DAYS**

HOMEOPATHY 



The night was torturous, I didn't wake up, but I had a lot of dreams; I never dream, I never remember dreams but this morning when I woke up I realized that I had been dreaming all night long or so it seems to me

**MAIL AFTER
2 DAYS**

HOMEOPATHY 



- I dreamt that I was in the jungle with a lot of wild animals, and I was running away without finding my way out but then I turned into a dragon and swallowed all the animals that were attacking me
- It was terrible...

**MAIL AFTER
2 DAYS**

HOMEOPATHY 



MY ANSWER

- Fantastic! You'll see that you'll get better quickly!
- Go on with 5 drops twice a day

**MAIL AFTER
2 DAYS**

HOMEOPATHY 



- I hardly have any diarrhea anymore, it's only happened twice in 2 weeks
- Asthma's a bit better; last week I caught a cold, started sneezing and coughing but the coughing wasn't devastating and the difficulty in breathing was less severe

**FOLLOW UP
AFTER 2 WEEKS**

HOMEOPATHY 



10MK

7 drops 2 times a day

**FOLLOW UP
AFTER 2 WEEKS**

HOMEOPATHY 



- The diarrhea is no longer there
- I got sick again but again this time the cough and asthma were more contained
- What has changed is my mood; I don't know, I feel happier, I see others differently

**FOLLOW UP
AFTER 4 WEEKS**

HOMEOPATHY 



- When I started taking KETIPINOR I saw everyone as an enemy and with the treatment this did not change so much; I felt less persecuted, but I did not see others in a positive way
- Now I could say that I have regained my trust in people

**FOLLOW UP
AFTER 4 WEEKS**

HOMEOPATHY 



50MK

**5 drops 2 times in a row
before sleep**

**(in case of asthmatic attack
5 drops every minute for 5 times)**

**FOLLOW UP
AFTER 4 WEEKS**

HOMEOPATHY 



- When I started the new treatment (50MK) I had the same effect as at the beginning of the other bottle with a really strong asthmatic attack but I did what you told me and took the drops for 5 times every minute
- I resisted a little but after 10 minutes the cough had gone completely and then I slept well

**CONSULTATION
AFTER 2 MONTHS
(MAY 2018)**

HOMEOPATHY 



- I had many more dreams that night but they were very different; I was happy, I was always in the jungle, but I was walking quietly and I remember stopping every five minutes to drink from rivers with very clean and clear water
- I no longer had asthma

**CONSULTATION
AFTER 2 MONTHS
(MAY 2018)**

HOMEOPATHY 



- I had a couple of episodes of diarrhea but not really important
- My menses are back and the side effects of KETIPINOR have also improved; I do not struggle anymore to swallow, and my vision is better too
- I feel much better, I am serene

**CONSULTATION
AFTER 2 MONTHS
(MAY 2018)**

HOMEOPATHY 



50MK

**5 drops 1 time
before sleep**

**CONSULTATION
AFTER 2 MONTHS
(MAY 2018)**

HOMEOPATHY 



She sent me an email and wrote:

- Dear Doctor, sorry for not writing to you in these months but I needed to make some important decisions.
- After our consultation I went back to the psychiatrist and told him that I wanted to stop the medicine he gave me but, according to him, I should continue

**FOLLOW UP
AFTER 6 MONTHS
(SEPTEMBER 2018)**

HOMEOPATHY 



- I wanted to write to you but I was afraid you would tell me the same thing, so I did it my way
- I slowly reduced KETIPINOR and haven't taken it for a month

**FOLLOW UP
AFTER 6 MONTHS
(SEPTEMBER 2018)**

HOMEOPATHY 



- I thought the remedy could help me, so I decided to take 15 drops twice a day
- Don't be angry with me, I am fine and thank you
- If you want please fix an appointment for me, so you can decide what to do

**FOLLOW UP
AFTER 6 MONTHS
(SEPTEMBER 2018)**

HOMEOPATHY 



50MK

**15 drops
before sleep**

**FOLLOW UP
AFTER 6 MONTHS
(SEPTEMBER 2018)**

HOMEOPATHY 



- The patient continued taking 15 drops 1 time a day
- She had no problems either physically or psychologically
- 50MK 15 drops for 1 time before sleep
- KEEP AT HOME 1M - 10M - 50M - 100M

**CONSULTATION
AFTER 7 MONTHS
(OCTOBER 2018)**

HOMEOPATHY 



- He calls me for an acute situation
- Since the day before he has had a fever (38.5), a persistent cough but the difficulty in breathing is minimal

**ACUTE
NOVEMBER 2018**

HOMEOPATHY 



50MK

**15 drops 3 times in a row every 1'
then 15 drops every hour**

**ACUTE
NOVEMBER 2018**

HOMEOPATHY 



She called again in the evening, but the situation has not improved; the fever has risen to 38.8 and the cough is still persistent

- **100MK 5 drops 3 times 1' apart then 5 drops every 30' until sleep**

**ACUTE
NOVEMBER 2018**

HOMEOPATHY 



The next morning, she called back saying that she slept without waking up; the cough is much improved, and she is relieved

- **100MK 5 drops every 2 hours then gradually reduce to 5 drops 1 time a day**

**ACUTE
NOVEMBER 2018**

HOMEOPATHY 



- She took the remedy 1 time a day until May 2021
- In May 2021 she contracted Covid with worrying respiratory symptoms; she felt very tired and depressed

2019 – 2022

HOMEOPATHY 



- I prescribed 1MK 1 drop every hour, reducing the frequency of administration over the following days and after 5 days the symptoms disappeared completely
- She no longer wrote or called me or answered my emails until September 2022

2019 – 2022

HOMEOPATHY 



- Dear Doctor, I apologize again for disappearing; perhaps in times of crisis I need to make up my own mind
- As you can imagine during the period of the pandemic, I was no longer able to have meetings with other men and then I never started again!
- In June 2022 I met a man and I fell in love, perhaps for the first time in my life

**MAIL FOLLOW UP
SEPTEMBER 2022**

HOMEOPATHY 



- I left my partner and finally feel I can have a normal life...
- I feel strong, I feel I no longer need support and if you agree I would try to stop taking her remedy. For the past few months, I have been feeling good and have often forgotten about it and had no problems
- I promise to write to you at the first cough!

**MAIL FOLLOW UP
SEPTEMBER 2022**


HOMEOPATHY 

UNCONVENTIONAL XMAS



- Dear Doctor, I am just writing to wish you a Merry Christmas and to tell you that the cough is gone
- I am getting married next year
- Thank you!

MAIL
24.12.2022

HOMEOPATHY 

SYMPTOMS FROM REPERTORY



Anne
Vervarcke



Carlo
Rezzani



André
Saine



Hélène
Renoux



Jeremy
Sherr

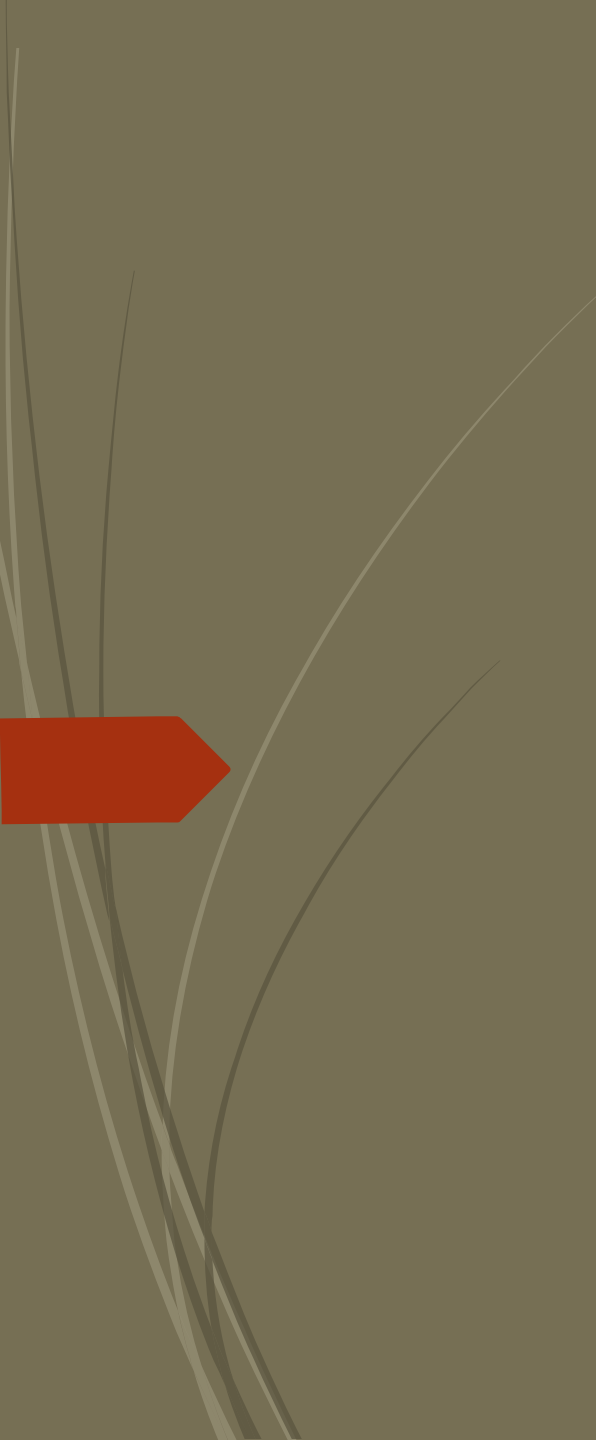


Massimo
Mangialavori

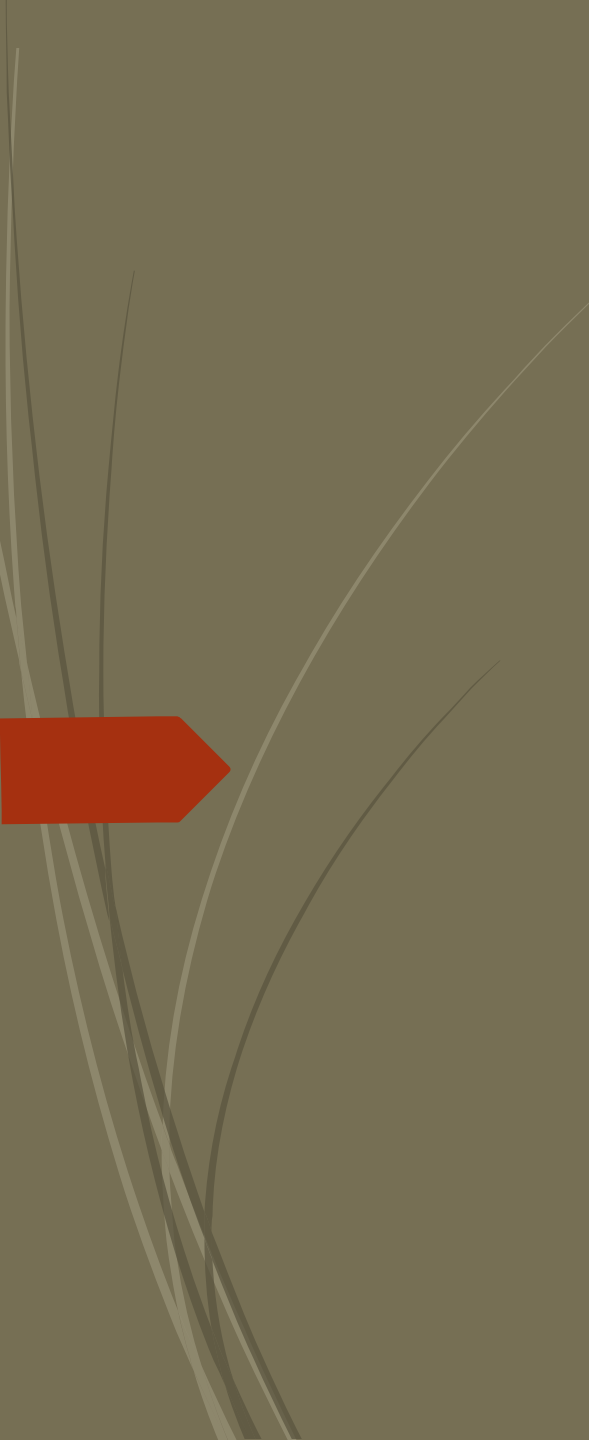


Roberto
Petrucci

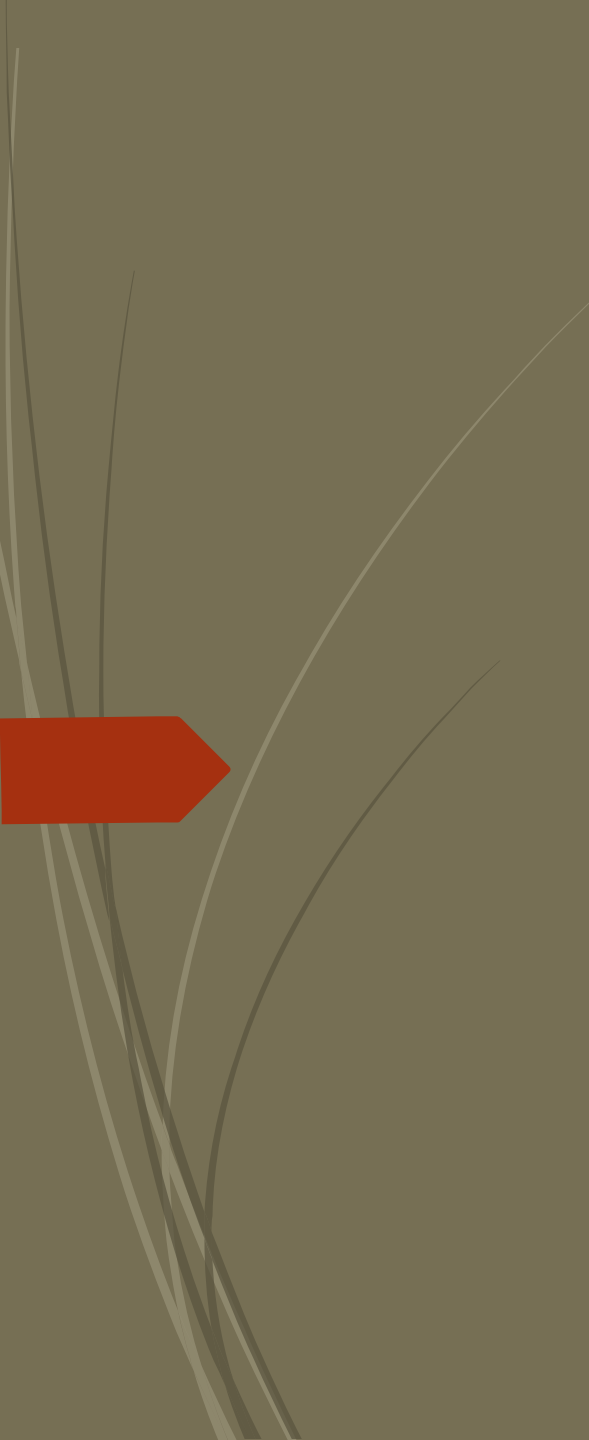
UNITING REPERTORY, MATERIA MEDICA AND PATIENT INFORMATION
IN A SINGLE INTUITIVE INTERFACE

- 
- RESPIRATION - ASTHMATIC
 - RESPIRATION - DIFFICULT - lying - agg.
 - RESPIRATION - DIFFICULT - inspiration



- 
- COUGH - DRY
 - COUGH - EXHAUSTING
 - COUGH - SPASMODIC
 - COUGH - SPASMODIC - night
 - COUGH - TORMENTING
 - COUGH - DRYNESS, FROM - Trachea; in



- 
- THROAT - DRYNESS
 - NOSE - DRYNESS - Inside
 - EYE - DRYNESS
 - FACE - DRYNESS - Lips
 - GENERALS - DRYNESS OF USUALLY MOIST INTERNAL PARTS






□ COUGH - WHOOPING

□ RESPIRATION - DIFFICULT - whooping cough

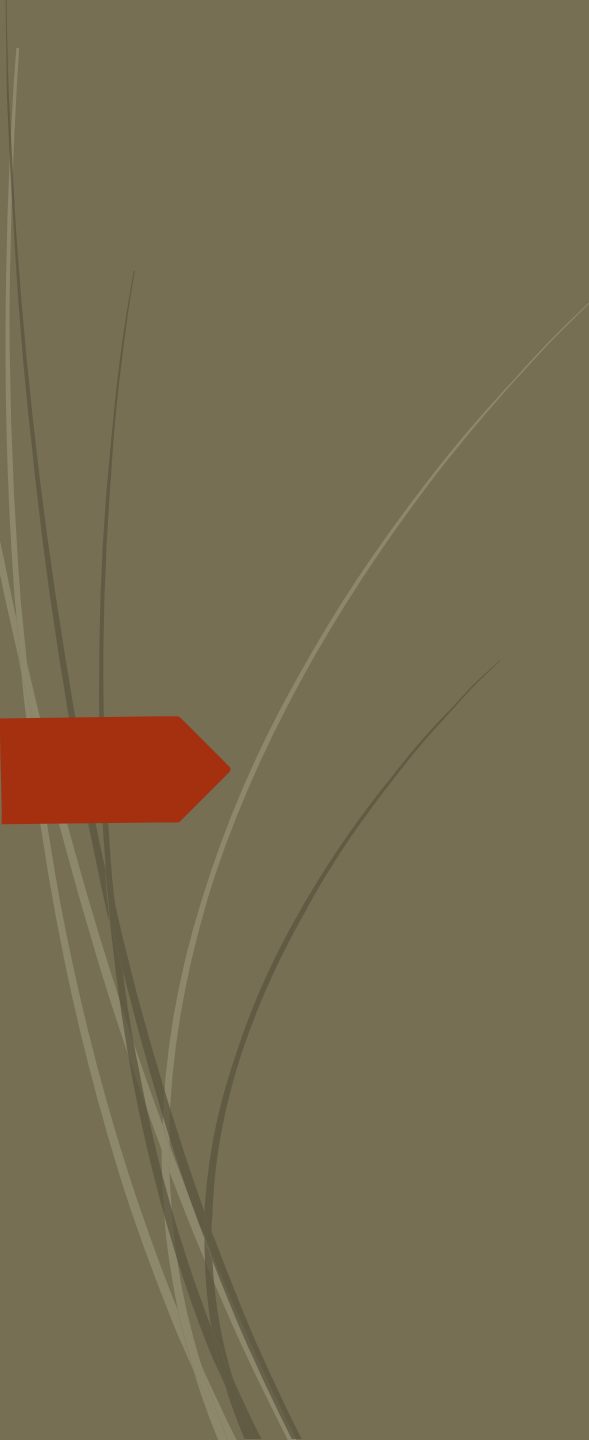


- 
- RECTUM - DIARRHEA - night - midnight - after
 - GENERALS - EMACIATION
 - STOMACH - NAUSEA - drinking - after - agg.




- 
- MIND - ANGER - trifles; at
 - MIND - ANGER - easily



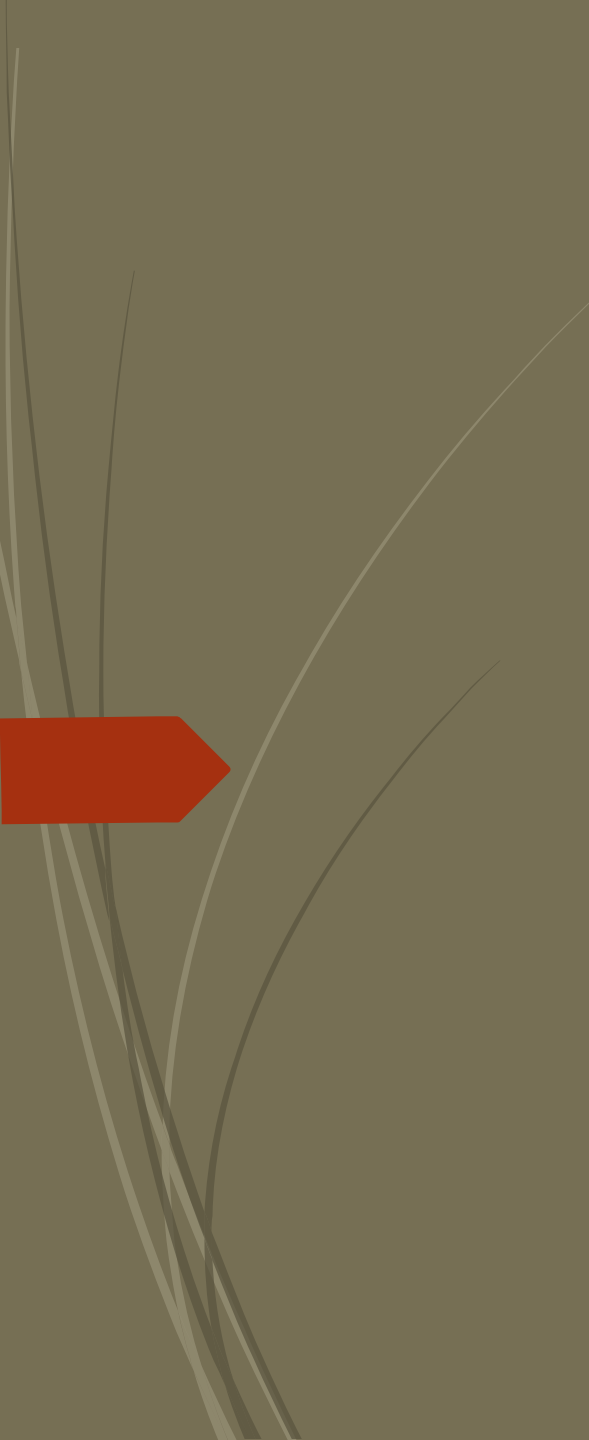
- 
- MIND - DELUSIONS - persecuted - he is persecuted
 - MIND - DELUSIONS - enemy - surrounded by enemies
 - MIND - DELUSIONS - deceived; being
 - MIND - SUSPICIOUS





□ MIND - FEAR - narrow place, in



- 
- THROAT - SWALLOWING - difficult - solids
 - FEMALE GENITALIA/SEX - MENSES - suppressed menses
 - FEMALE GENITALIA/SEX - MENSES - absent
 - FEMALE GENITALIA/SEX - MENSES - scanty

 - VISION - BLURRED - letters





	dros.	lyc.	afs.	phos.	calc.	nux-v.	kali-c.	chin.	puls.	sulph.	bry.	verat.	spong.	bell.	nat-m.	carb-v.	caust.	sil.	arg-n.	ferr.	rhus-t.	lach.	sep.	acon.	merc.	sang.	ign.	kali-bi.	hep.	zinc.	ant-x	
1. RESPIRATION - ASTHMATIC (390) 1	2	2	3	2	2	2	3	2	3	3	2	2	3	2	2	1	3	3	2	1	2	2	2	1	2	2	1	2	1	2	2	
2. RESPIRATION - DIFFICULT - lying - agg. (105) 1	1	2	3	2	1	1	3	2	2			2		1	3	1	2		2		2	2	1	2	1		2	2	1	2	1	
3. RESPIRATION - DIFFICULT - inspiration (55) 1	1	1	2	2	2	1	1	1			2	1	2			3		2	2				2		2	2		1	1		1	
4. COUGH - DRY (448) 1	1	2	3	3	3	3	3	3	3	3	3	1	3	3	3	2	2	2	1	2	2	3	2	3	2	2	3	2	2	2	1	2
5. COUGH - EXHAUSTING (124) 1	2	1	3	2	1	2	2	1	2	1	1	1	1	3		2	3	2	1	1	2	2	3	2	2	1	1	1	1	1	2	
6. COUGH - SPASMODIC (187) 1	3	1	2	2	2	3	2	3	3	2	3	2	3	3	2	3	2	1	2	2	2	1	3	1	2	2	2	1	2	2	2	
7. COUGH - SPASMODIC - night (54) 1	3	1		2	1		1	3	2	1	2		1	3		1		1	1	2	1			1	2	1		2			1	
8. COUGH - TORMENTING (81) 1	3	1	3	2	2	2	2	1		2		1	1	3	2	1	3		1		1	2	1		1	2		1	1		2	
9. COUGH - DRYNESS, FROM - Trachea; in (7) 1	2							2																								
10. THROAT - DRYNESS (403) 1	2	3	2	3	3	2	2	1	3	3	3	3	2	3	3	2	3	3	2	1	3	2	3	2	3	3	2	3	2	2	1	2
11. NOSE - DRYNESS - Inside (259) 1	1	3	3	3	3	2	2	1	1	3	2	2	3	3	3	3	2	3		2	1	2	2	2	1	1	3		2	1	1	
12. EYE - DRYNESS (179) 1	1	3	3	1	1	2	1	1	3	3	1	3	1	3	1	1	2	1	2		2	1	2	3	1	2	1	1	1	3		
13. FACE - DRYNESS - Lips (222) 1	1	2	2	2	2	2	2	2	3	3	3	2	1	2	2	1	1	2	2	2	3	2	2	2	2	1	2	2		1	2	1
14. GENERALS - DRYNESS OF USUALLY MOIST INTERNAL PARTS (140) 1	1	2	2	3	3	1	1	1	2	3	4	2	1	3	3	1	1	2	1	1	2	1	3	2	2	1	1	2	1	2	1	1
15. COUGH - WHOOPING (179) 1	3	2	2	2	2	2	2	2	2	2	2	2	2	2	2	3	2	2	2	2	1	1	2	1	1	2	1	2	2	1	2	1
16. RESPIRATION - DIFFICULT - whooping cough (24) 1	2										2		1		2												1	1		2		
17. RECTUM - DIARRHEA - night - midnight - after (63) 1	1	1	3	2		2	1	2		3	1	2		1				2	1	1												
18. GENERALS - EMACIATION (314) 1	1	3	3	3	3	3	2	3	2	3	2	2	1	2	3	2	2	3	2	3	2	2	1		2		2	1	2	2	1	1
19. STOMACH - NAUSEA - drinking - after - agg. (52) 1	1	1	2	2	1	2		1	3		1	3	1	1	2			1		3	1	2		1			1				1	
20. MIND - FEAR - narrow place, in (110) 1																																



- ▶ 1. MIND - ANGER - trifles; at (96) 1
- ▶ 2. MIND - ANGER - easily (79) 1
- ▶ 3. MIND - DELUSIONS - persecuted - he is persecuted (69) 1
- ▶ 4. MIND - DELUSIONS - enemy - surrounded by enemies (11) 1
- ▶ 5. MIND - DELUSIONS - deceived; being (14) 1
- ▶ 6. MIND - SUSPICIOUS (150) 1
- ▶ 7. MIND - DELUSIONS - trapped; he is (21) 1
- ▶ 8. MIND - MONOMANIA (46) 1
- ▶ 9. MIND - THOUGHTS - persistent (152) 1

	dros.	ign.	staph.	anac.	aur.	bell.	con.	hell.	verat.	nux-v.	ats.	rhus-t.	sulph.	acon.	cham.	chin.	cocc.	nat-m.	plat.	sil.	thu.j.	am.br.	cupr.	ruta.	androc.	positr.	sal-fr.	spong.	lyc.	crot-h.	lach.	
1	2	1	1	1	2	1	1	2	2	2	1	2	2	1	2	2	2	1	1		1	2		1		1	1					
2	1	1		1	1	1	2		3	1		1	3		2	1	2		2			1	1		1	1	3	2				
3	3	2	1	1	1	1	1	1	1	1	2			3		1		1		1	1		1	1	1	1	1	1	1	2	1	
4	1		2					1													1								2			
5	1	2	2	3	2	2	1	2	1	2	3	3	3	1	1	2	1	1	1	1	1	2	1	1	1	1		4	2	3	3	
6		1																							1	1						
7	1	2		1	1	1	1	1			1	1	1	1	1	1		1	2	1	1	1		1	1				1	1		
8	1	2	2	1	3	2	2	1	2	2	2	2	1	1	2	1	3	1	2	2	2	1	1		1	1			1	2		



- ▶ 1. THROAT - SWALLOWING - difficult - solids (41) 1
- ▶ 2. FEMALE GENITALIA/SEX - MENSES - suppressed menses (205) 1
- ▶ 3. FEMALE GENITALIA/SEX - MENSES - scanty (254) 1
- ▶ 4. FEMALE GENITALIA/SEX - MENSES - absent (212) 1
- ▶ 5. VISION - BLURRED - letters (34) 1

	kali-c.	sil.	sulph.	bell.	lyc.	nat-m.	arg-n.	dro.	stram.	graph.	lach.	bar-c.	sep.	apis	ars.	ferr.	phos.	nux-v.	rhust.	staph.	bry.	carb-v.	ign.	merc.	plb.	chel.	chin.	zinc-p.	con.	dulc.	puls.
1	2	2	1	2	1	2	2	2	1		2	3	1	2			1	2	2		1	2	1	1	2		1	1			
5	5	5	5	5	5	5	5	5	4	4	4	4	4	4	4	4	4	4	4	4	4	4	4	4	4	4	4	3	3	3	3
12	11	11	10	10	10	9	7	6	10	10	9	9	8	8	8	8	7	7	7	6	6	6	6	6	5	5	4	9	9	9	9
2	2	1	2	1	2	2	2	1		2	3	1	2			1	2	2		1	2	1	1	2		1	1				
3	3	3	3	3	2	2	1	2	3	3	2	2	2	2	2	2	1	2	2	2	1	1	1	1	1	1	1	3	3	3	3
3	2	3	1	2	3	3	1	1	3	3	2	3	2	2	2	3	2	1	2	1	2	2	2	2	1	1	1	3	3	3	3
3	3	3	2	3	2	1	2	1	3	2	2	3	2	2	3	2	2	2	2	2	1	2	2	1	1	2	1	3	3	3	3
1	1	1	2	1	1	1	1	1	1					2	1					1					2						

	dros.	lyc.	ars.	sulph.	bell.	nux-v.	chin.	phos.	nat-m.	sil.	verat.	ign.	bry.	kali-c.	calc.	mus-t.	puls.	lach.	con.	spong.	sep.	acon.	arg-n.	carb-v.	merc.	caust.	ferr.	cham.	cocc.	zinc.	dulc.	stam.	thuj.	staph.	ana-c.	bar-c.	nit-ac.	aur.	hep.
1	2	3	4	5	6	7	8	9	10	11	12	13	14	15	16	17	18	19	20	21	22	23	24	25	26	27	28	29	30	31	32	33	34	35	36	37	38	39	40
32	27	26	26	26	26	26	25	25	25	25	25	24	24	24	24	23	23	23	23	22	22	22	22	22	21	21	21	21	21	20	20	20	20	20	19	19	19	19	19
50	52	59	58	55	50	43	52	49	47	42	40	45	45	44	42	54	42	37	35	43	40	39	39	36	40	38	35	35	34	33	33	31	29	26	37	32	29	29	29

DROSE ROTUNDIFOLIA

ROUND-LEAVED SUNDEW

dros. (Synthesis Adonis 3389)

GROUP: CARNIVOROUS PLANTS



HOMEOPATHY  ESSENTIALS

Roberto Petrucci - Viktória Németh

DROSERA ROTUNDIFOLIA

- Victim and executioner
- Attracting and luring with deception
- Sensation of being persecuted and trapped with aggressive and violent reaction
- Superficiality, lack of responsibility with a tendency to blame others
- Insecure and easily offended
- Cramps and cramping pains at different levels (bronchi, stomach, abdomen, back and muscles)
- Aggravation after midnight (restlessness, respiratory complaints, cough, bone pains, growing pains)
- Tubercular miasm



DIONAEA MUSCIPULA

VENUS FLYTRAP

dion-mus. (Synthesis Adonis 3)

GROUP: CARNIVOROUS PLANTS



HOMEOPATHY  ESSENTIALS

Roberto Petrucci - Viktória Németh

DIONAEA MUSCIPULA

- Victim and executioner
- Conflict between feeling of not being seen and desire to be noticed (first phase)
- Desire to move up in the hierarchy and use his position to intimidate and bully others
- Boaster: magnifying and exaggerating without shame (second phase)
- Clever deception and betrayal
- Trap, constriction, claustrophobia and suffocation
- Gastrointestinal tract complaints: nausea; diarrhea with urging after eating
- Splinter-like pain aggravated from motion





Roberto Petrucci & Viktória Németh

MURİATİKLER

2 vaka, 4 remedi



7-8 KASIM
20.00-23.00

LEGUMINOSAE

BAKLAGİLLER

2 vaka, 4 remedi



5-6 ARALIK
20.00-23.00

LAMIACEAE

BALLIBABAGİLLER

2 vaka, 4 remedi



9-10 OCAK
20.00-23.00



WhatsApp 0530 545 03 25

İngilizceden ardışık çeviri